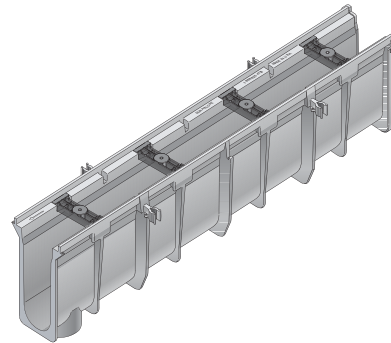


# DURA SLOPE™ CHANNEL DRAINS

NDS Dura Slope™ is a 6<sup>5</sup>/<sub>8</sub>" wide, 4-foot-long trench drain system with a built-in slope of 0.7%. Each channel section is molded of gray structural foam polyethylene with UV inhibitors and has a 4" inside diameter with a 2" radius bottom. The system consists of 4-foot channel sections including 24 pre-sloped channel sections and 9 neutral channel sections. The sloped channel sections enable the system to extend to a length of 96 feet with a continuous slope.



Part No.	Description	Flow Rate GPM	Min. Inner Depth	Max. Inner Depth	Min. Outer Depth	Max. Outer Depth	Wt. Ea. (lbs.)
DS-090N	3.99" Deep Neutral Dura Slope Channel	75	3.998	3.998	5.354	5.760	7.45
DS-091	3.99" to 4.34" Deep Dura Slope Channel	75	3.998	3.998	5.690	5.770	7.52
DS-091N	4.34" Deep Neutral Dura Slope Channel	89	4.334	4.334	5.692	6.103	7.81
DS-092	4.34" to 4.67" Deep Dura Slope Channel	89	4.334	4.670	6.062	6.106	7.92
DS-093	4.67" to 5.00" Deep Dura Slope Channel	103	4.670	5.006	6.362	6.442	8.27
DS-094	5.00" to 5.34" Deep Dura Slope Channel	117	5.006	5.342	6.698	6.778	8.64
DS-094N	5.34" Deep Neutral Dura Slope Channel	131	5.342	5.342	6.700	7.111	8.93
DS-095	5.34" to 5.68" Deep Dura Slope Channel	131	5.342	5.678	7.034	7.114	8.99
DS-096	5.68" to 6.01" Deep Dura Slope Channel	145	5.678	6.014	7.370	7.450	9.36
DS-097	6.01" to 6.35" Deep Dura Slope Channel	159	6.014	6.350	7.706	7.786	9.74
DS-097N	6.35" Deep Neutral Dura Slope Channel	173	6.350	6.350	7.708	8.119	10.04
DS-098	6.35" to 6.69" Deep Dura Slope Channel	173	6.350	6.686	8.042	8.122	10.11
DS-099	6.69" to 7.02" Deep Dura Slope Channel	187	6.686	7.022	8.378	8.458	10.48
DS-100	7.02" to 7.36" Deep Dura Slope Channel	201	7.022	7.358	8.714	8.794	10.86
DS-100N	7.36" Deep Neutral Dura Slope Channel	215	7.358	7.358	8.716	9.127	11.16
DS-101	7.36" to 7.69" Deep Dura Slope Channel	215	7.358	7.694	9.050	9.130	11.23
DS-102	7.69" to 8.03" Deep Dura Slope Channel	229	7.694	8.030	9.386	9.466	11.60
DS-103	8.03" to 8.37" Deep Dura Slope Channel	243	8.030	8.366	9.722	9.802	11.98
DS-103N	8.37" Deep Neutral Dura Slope Channel	257	8.366	8.366	9.724	10.135	12.27
DS-104	8.37" to 8.70" Deep Dura Slope Channel	257	8.366	8.702	10.058	10.138	12.34
DS-105	8.70" to 9.04" Deep Dura Slope Channel	271	8.702	9.038	10.394	10.474	12.71
DS-106	9.04" to 9.37" Deep Dura Slope Channel	285	9.038	9.374	10.730	10.810	13.07
DS-106N	9.37" Deep Neutral Dura Slope Channel	299	9.374	9.374	10.732	11.143	13.39
DS-107	9.37" to 9.70" Deep Dura Slope Channel	299	9.374	9.710	11.066	11.146	13.4
DS-108	9.70" to 10.05" Deep Dura Slope Channel	313	9.710	10.046	11.402	11.482	13.83
DS-109	10.05" to 10.38" Deep Dura Slope Channel	327	10.046	10.382	11.738	11.818	14.20
DS-109N	10.38" Deep Neutral Dura Slope Channel	341	10.382	10.382	11.740	12.151	14.50
DS-110	10.38" to 10.71" Deep Dura Slope Channel	341	10.382	10.718	12.074	12.154	14.57
DS-111	10.71" to 11.05" Deep Dura Slope Channel	355	10.718	11.054	12.410	12.490	14.95
DS-112	11.05" to 11.39" Deep Dura Slope Channel	368	11.054	11.390	12.746	12.826	15.32
DS-112N	11.39" Deep Neutral Dura Slope Channel	382	11.390	11.390	12.785	13.158	15.6
DS-113	11.39" to 11.72" Deep Dura Slope Channel	382	11.390	11.726	13.082	13.162	15.69
DS-114	11.72" to 12.06" Deep Dura Slope Channel	396	11.726	12.062	13.418	13.498	16.06

Note: All dimensions are nominal. All weights are for shipping purposes only. Availability is subject to change.